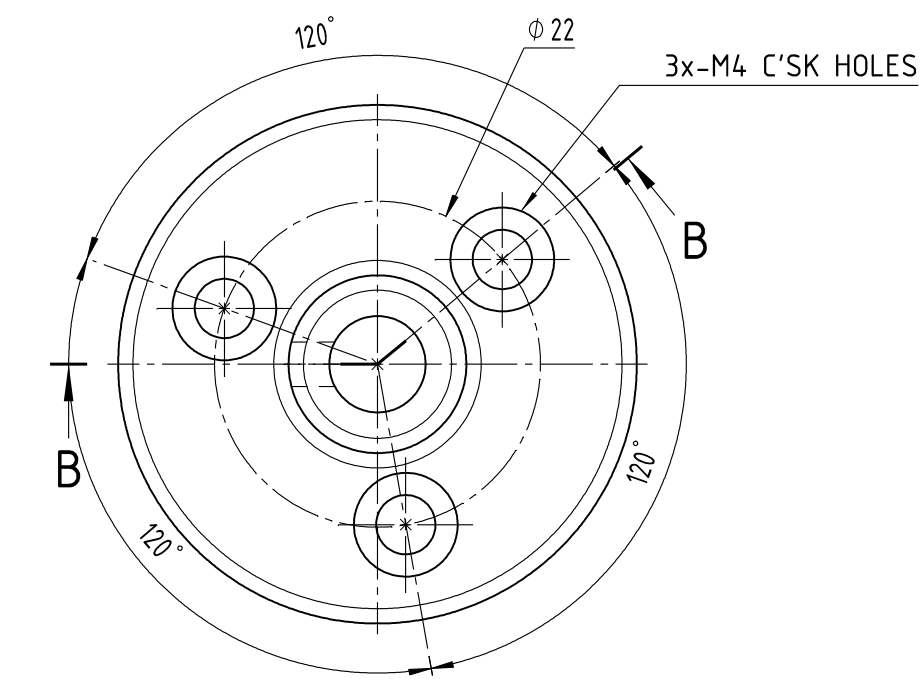
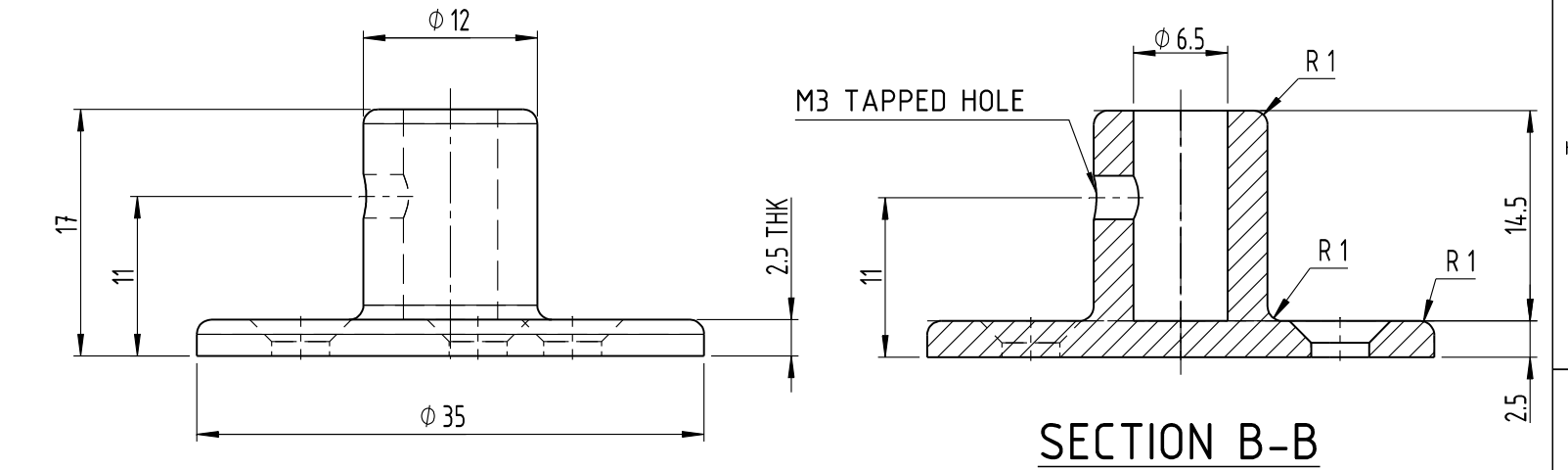





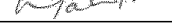
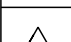

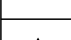
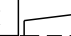


3		2					1				
MACHINING DEVIATIONS FOR LINEAR DIMENSIONS		RANGE	0 - 6	6 - 30	30 - 120	120 - 315	315-1000	1000-2000	2000-4000	ABOVE 4000	RA
		TOLERANCE	+0.1	+0.2	+0.3	+0.5	+0.8	+1.2	+2	+3	~
FOR DIMENSIONAL TOLERANCES OF SHEET METAL PARTS AND WELDED STRUCTURES, REFER STD. RD-227											
UNSPECIFIED TOLERANCE FOR LINEAR AND ANGULAR DIMENSIONS REF. IS 2102 (PT-1) (MEDIUM)								QUALITY OF WELD JOINTS REF. RD 230 MEDIUM			
VALUES OF SURFACE TEXTURE SHALL BE AS PER COMPANY STD. 05.102C.								STATUS:		PROTO/PRODUCTION	
WELDING SHALL BE CARRIED OUT AS PER IS: 9595-96											

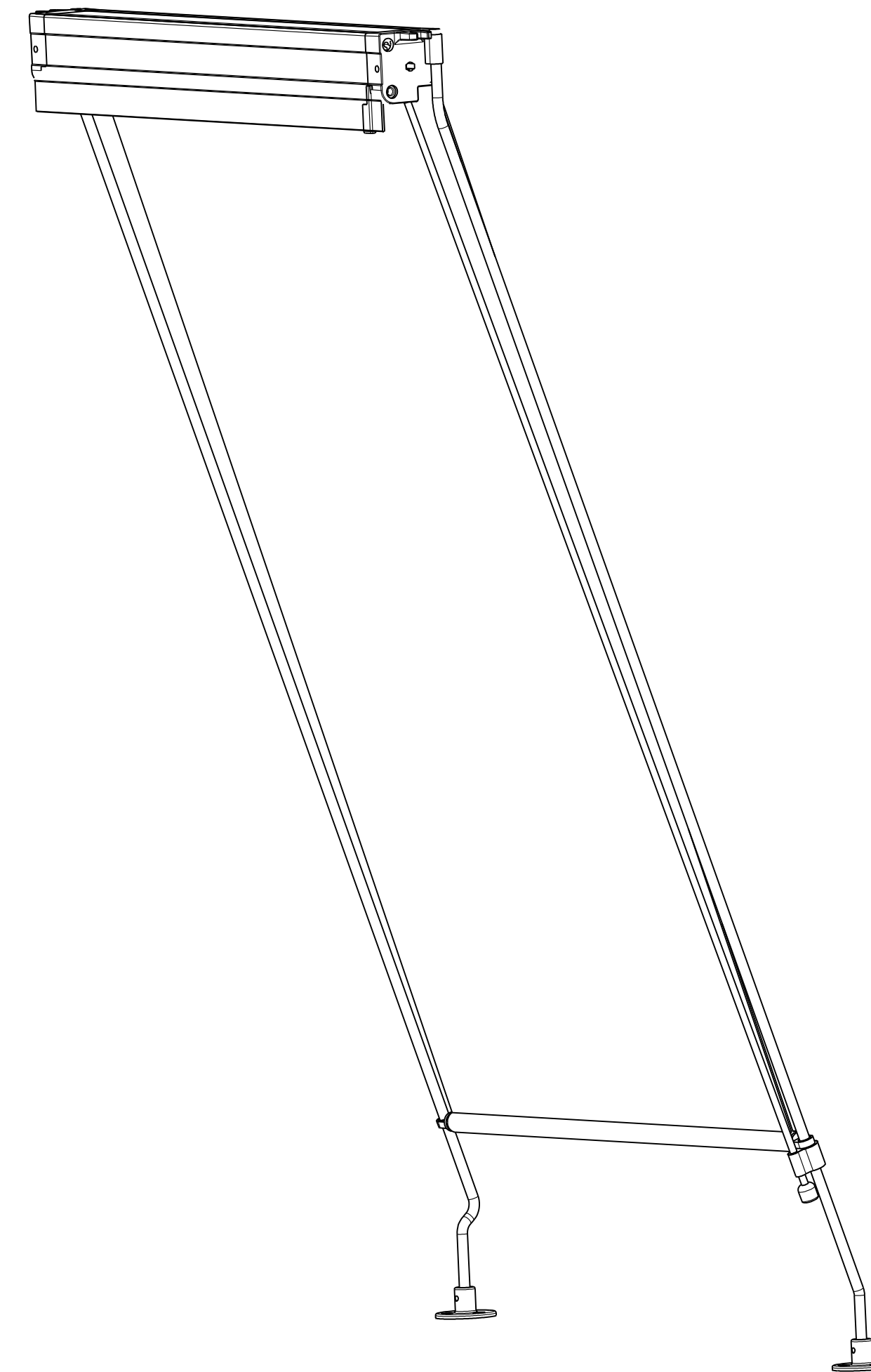
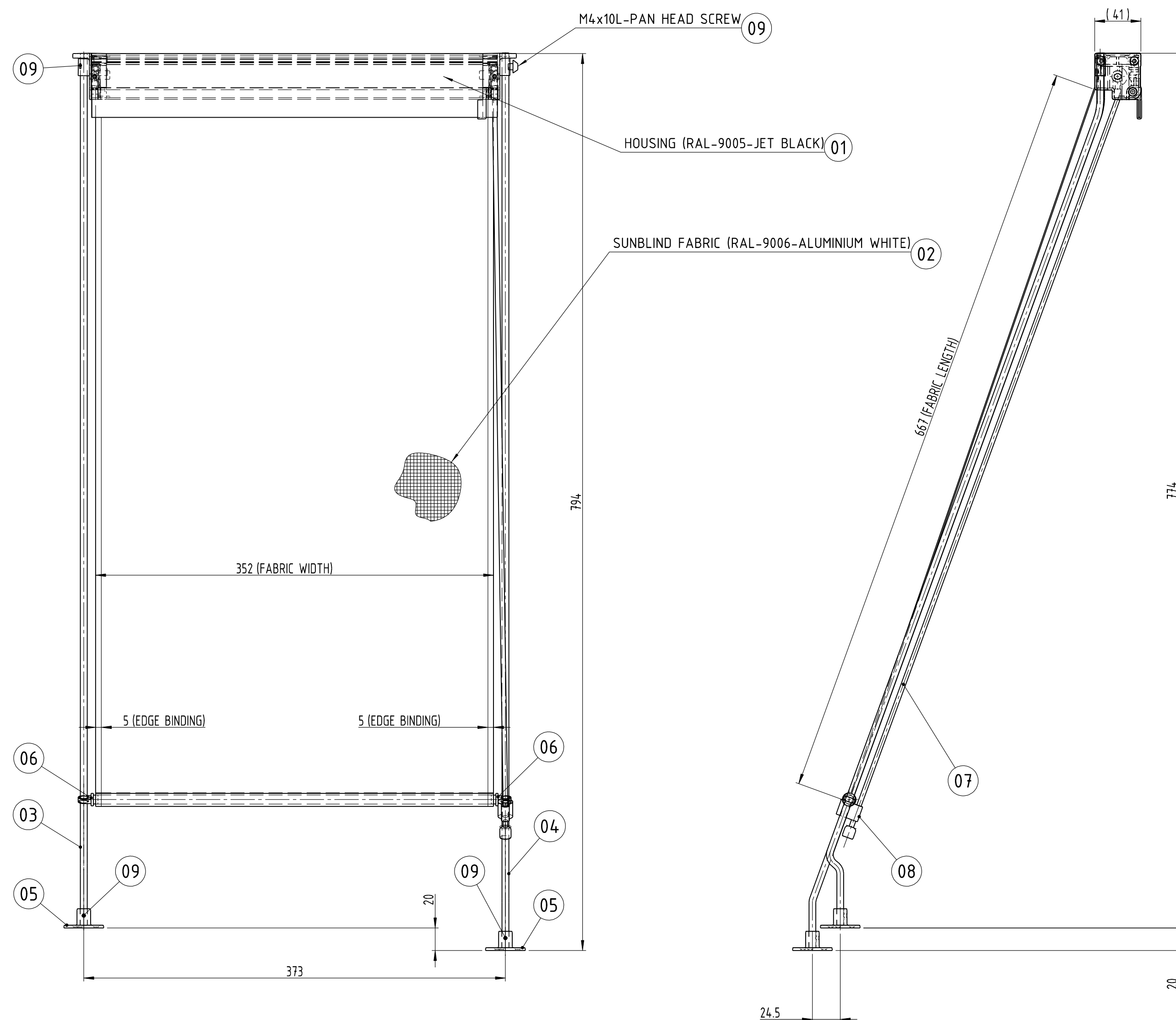


SPECIFICATION :

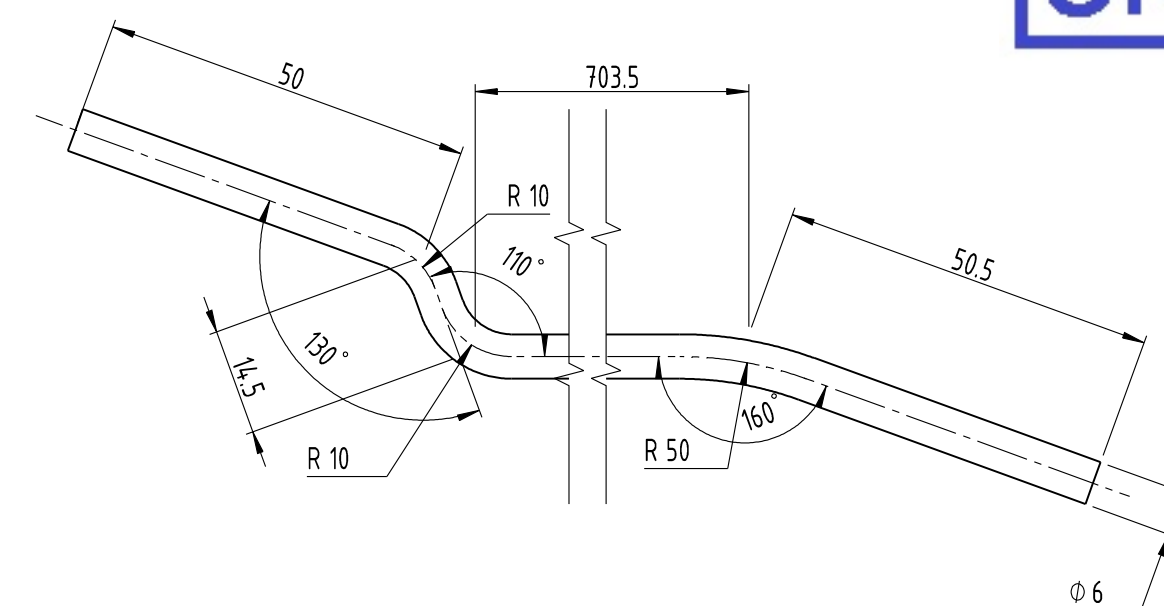
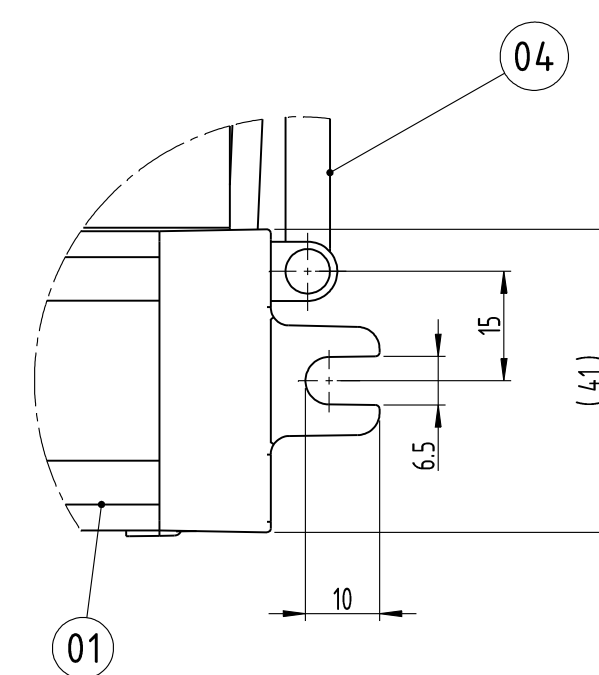
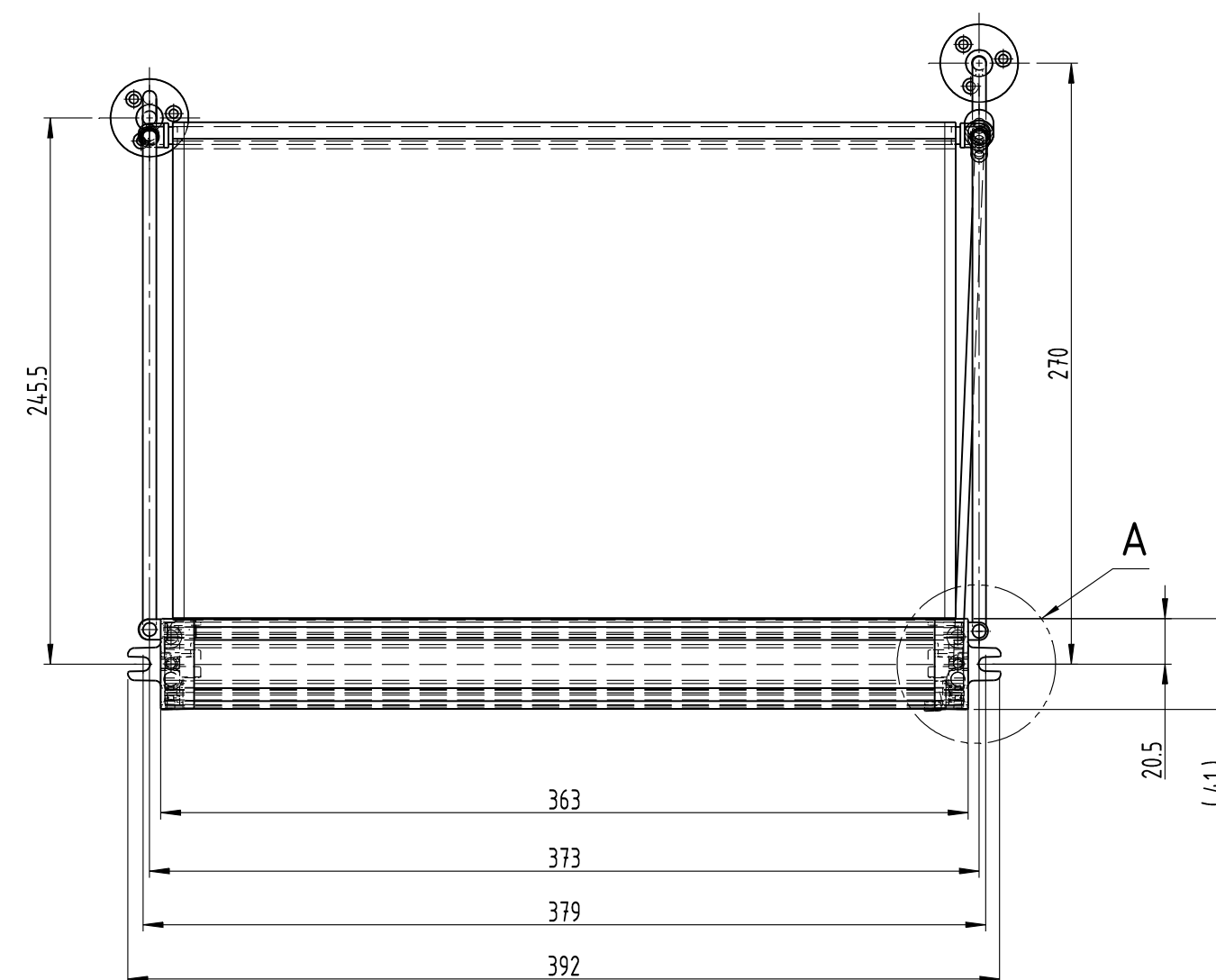
TYPE :	ROLLER BLIND
OPERATION :	MANUALLY OPERATED
MOUNTING TYPE :	CEILING MOUNTING TYPE
FABRIC :	
MATERIAL :	FIBRE GLASS FABRIC WITH PVC/VINYL COATING OR POLYESTER (PES) FABRIC
COLOUR :	RAL 9006-WHITE ALUMINIUM
VISIBILITY :	TRANSLUCENT
OPENNESS FACTOR :	5 TO 10 %
FIRE SAFETY :	SHALL COMPLY TO EN 45545-HL3 R1 REQUIREMENTS
EDGE BINDING :	TO BE PROVIDED

12	1	-	GRIP-PULL	-	HARD PLASTIC-BLACK COLOUR
11	1	-	CROSS RECESSED PAN HEAD SCREW	M3x5	IS-7483,MATL: ISO:3506, Gr-A2-70,SS
10	2	-	CROSS RECESSED PAN HEAD SCREW	M4x10	IS-7483,MATL: ISO:3506, Gr-A2-70,SS
9	2	-	SET SCREW, SOCKET-HEX HEAD	M3x2.5L-FLAT POINT (FP)	IS 6094/MATL : ISO:3506, Gr-A2-70,SS
8	1	-	STOPPER	-	HARD PLASTIC-BLACK COLOUR
7	1	-	ROPE-PULL	Ø3	ARAMID ROPE
6	2	-	GUIDE SLIDER	-	HARD PLASTIC-BLACK COLOUR
5	2	-	GUIDE BRACKET	-	SUS304/AISI304
4	1	-	GUIDE RAIL RH	Ø6	SUS304/AISI304
3	1	-	GUIDE RAIL LH	Ø6	SUS304/AISI304
2	1	-	FABRIC-TRASLUCENT	-	FIRE RETARDANT GLASS FIBRE FABRIC/POLESTER(PES) FABRIC
1	1	-	SUN BLIND HOUSING	-	ASSY

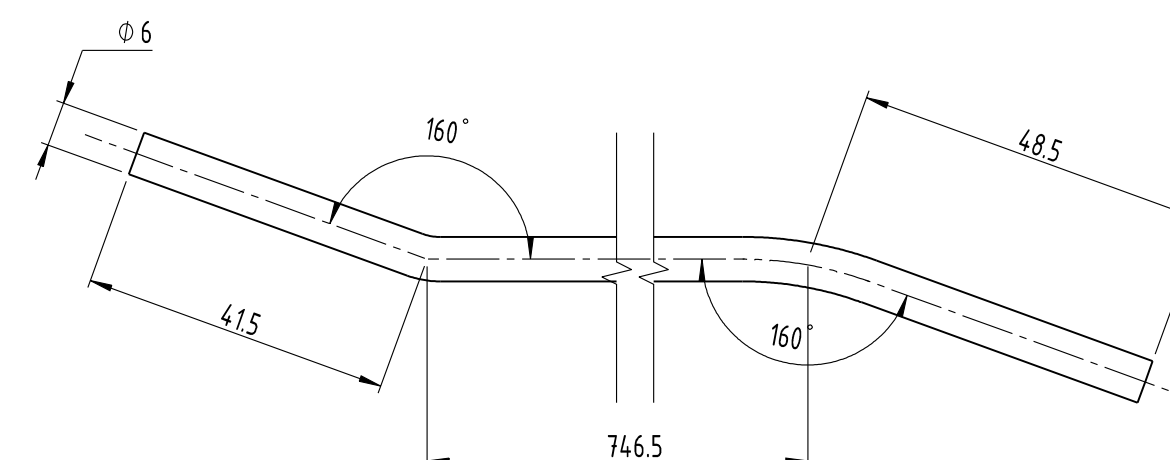
SL.No.	QTY	PART / STOCK No.	DESCRIPTION		SIZE	COMPANY STD./I/S	WT. (kg)
						MATERIAL	
			PRODUCT	MUMBAI METRO CARS - L2 & L7			
			REF. DRG				
			MATERIAL	-			
			HEAT TREAT SURFACE TREAT	APPD		20.03.2020	
			TITLE	REV'D		20.03.2020	
				CHKD	M. Suresh	20.03.2020	
				DRWN		20.03.2020	
				SCALE		SHEET 1 of 1	WT: -
				DRG No.			ALT: -
ALT.NO	ECN NO/CHANGES	DATE	BY	CHKD	PRPD	 BEM LIMITED <small>ISO 9001:2015 CERTIFIED</small>	
						525-18087 	

ISOMETRIC VIEW

UNCONTROLLED



DETAIL-3



DETAIL-4

NOTE :

1. ALL DIMENSIONS ARE IN mm.
2. THE SUNBLIND ASSY SHALL COMPLY TO THE TDC DOC NO. GR/TD/5005.
3. THE FABRIC MATERIAL SHALL BE OF FIBER GLASS FABRIC WITH PVC/VINYL COATING OR POLYESTER (PES) FABRIC
-TRANSLUCENT & FIRE SAFE, FIRE SAFETY SHALL COMPLY TO EN 45545-HL3 R1 REQUIREMENT.
COLOUR: RAL 9006-WHITE ALUMINIUM.
4. THE EXPOSED SURFACE OF ITEM 1 - HOUSING ASSY SHALL BE PAINTED.
COLOUR : BLACK TO RAL 9005.
5. ITEM 3 & 4 SHALL BE BUFF TO MIRROR FINISHED.
6. THE SAMPLE APPROVAL SHALL BE OBTAINED BEFORE BULK SUPPLIES.